



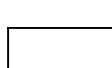

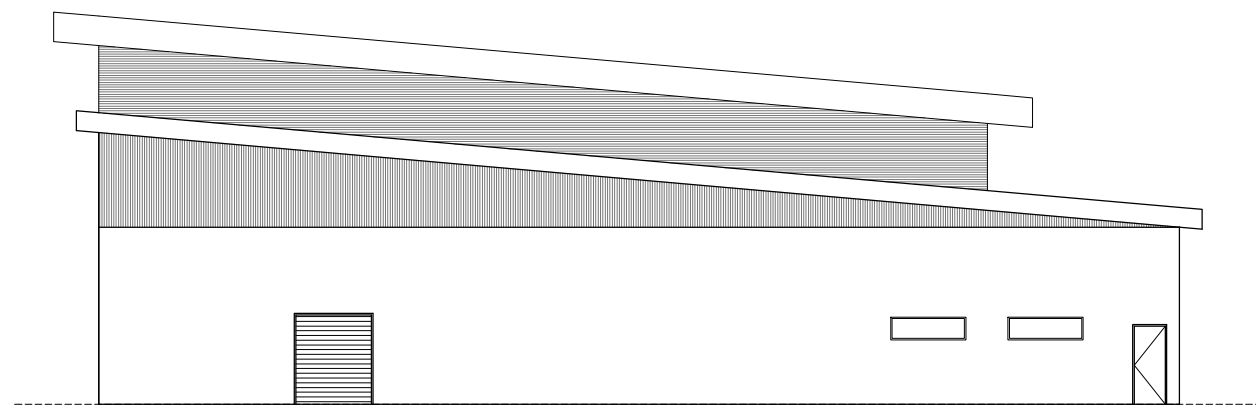


-  Sandstone blocks to match existing school wall cladding.
-  Zincalume custom orb metal sheet cladding.
-  Fixed glazing with coloured tint.
-  Rendered feature columns.
-  Concrete panels.
-  Zincalume mini orb metal sheet cladding.

PROPOSED EXTERNAL ELEVATION- SOUTH
SCALE 1:200



PROPOSED EXTERNAL ELEVATION- WEST
SCALE 1:200

CONCEPT STAG

No:	Amendments:	North:

BUILDING THE EDUCATION REVOLUTION
COLAC PRIMARY SCHOOL
 MURRAY STREET, COLAC, 3250
PROPOSED BASKETBALL STADIUM

Drawn:	Designed By:	Checked By:	Approved By:	Date:	Scales:	Sheet No:
HH	AN	DW	FP	10/08/2009	1:200	00 of 00
Drawing Title: PROPOSED EXTERNAL ELEVATIONS- SOUTH & WEST						


Pavan Consultants
 537 High Street, Preston, 3072
 Tel : (03) 9471 2999 Fax : (03) 9471 2988

Revision:	Dwg No:
0	430/09

USE FIGURED DIMENSIONS IN PREFERENCE TO SCALED. CHECK ALL DIMENSIONS ON SITE BEFORE FABRICATION OR SET OUT.