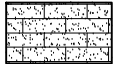



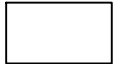
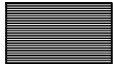
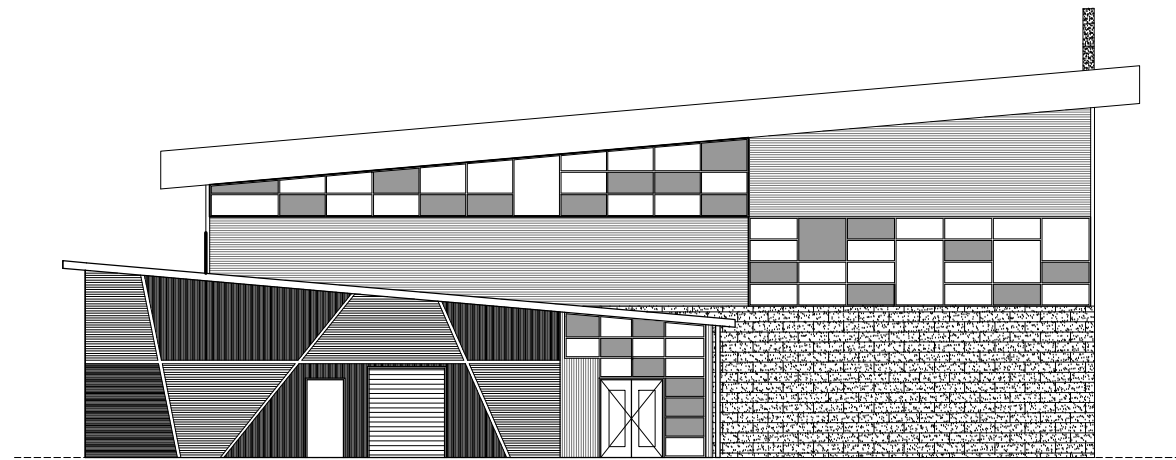


-  Sandstone blocks to match existing school wall cladding.
-  Zincalume custom orb metal sheet cladding.
-  Fixed glazing with coloured tint.
-  Rendered feature columns.
-  Concrete panels.
-  Zincalume mini orb metal sheet cladding.

- PROPOSED EXTERNAL ELEVATION- NORTH (LYONS STREET)  
- SCALE 1:200



- PROPOSED EXTERNAL ELEVATION- EAST  
- SCALE 1:200

# CONCEPT STAG

No:	Amendments:	North:

**BUILDING THE EDUCATION REVOLUTION**  
**COLAC PRIMARY SCHOOL**  
MURRAY STREET, COLAC, 3250  
**PROPOSED BASKETBALL STADIUM**

Drawn:	Designed By:	Checked By:	Approved By:
HH	AN	DW	FP
Drawing Title:			
PROPOSED EXTERNAL ELEVATIONS- NORTH & EAST			

Date:	Scales:	Sheet No:
10/08/2009	1:200	00 of 00

USE FIGURED DIMENSIONS IN PREFERENCE TO SCALED. CHECK ALL DIMENSIONS ON SITE BEFORE FABRICATION OR SET OUT.

  
**Pavan Consultants**  
537 High Street, Preston, 3072  
Tel : (03) 9471 2999 Fax : (03) 9471 2988

Revision:	Dwg No:
0	430/09